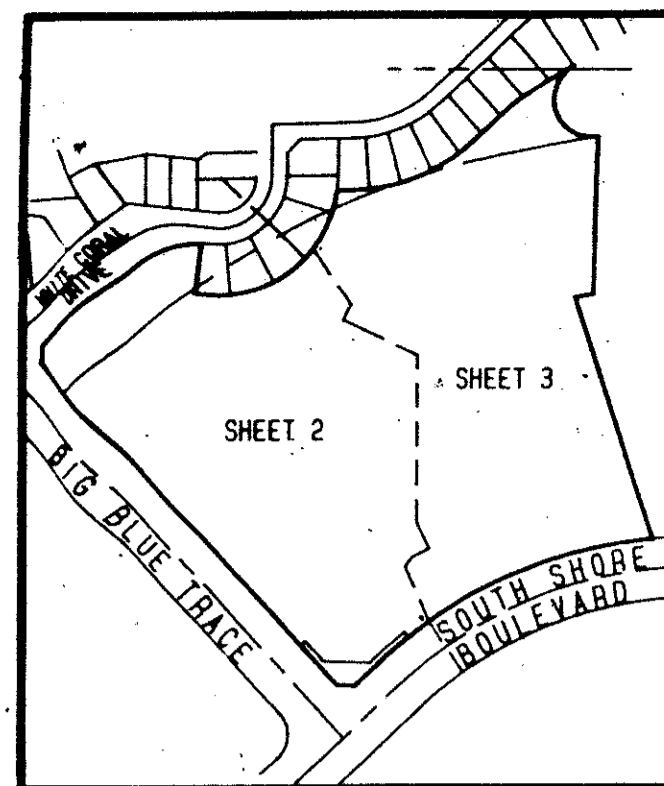


TRACT 44 OF WELLINGTON, P. U. D.

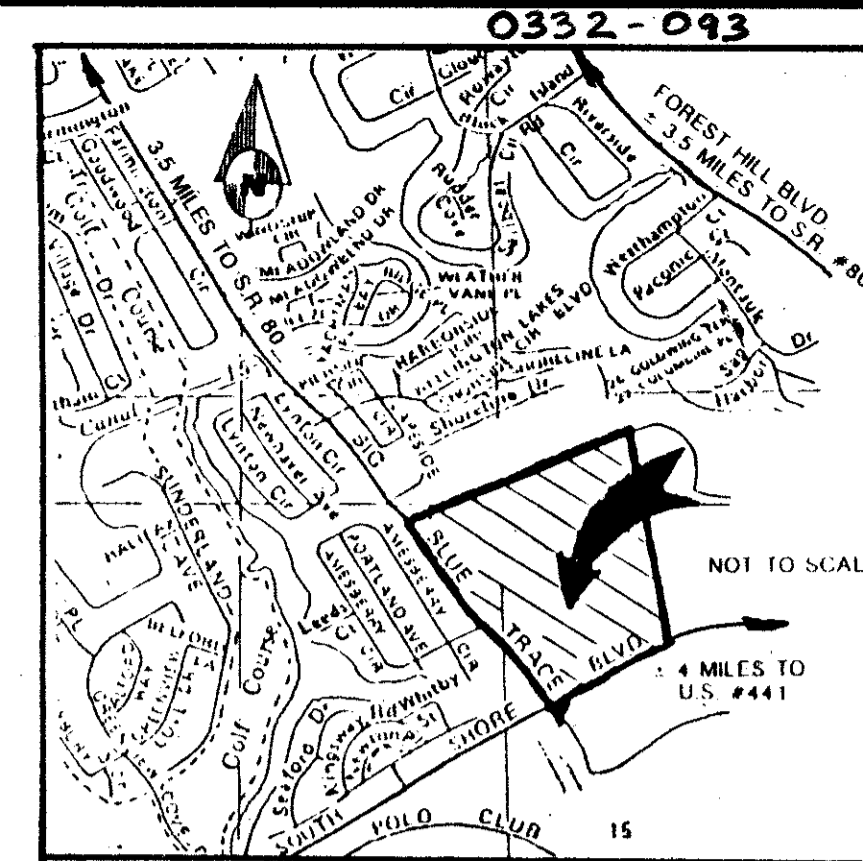
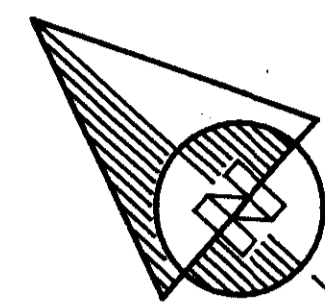
BEING A REPLAT OF A PART OF TRACT 43 WELLINGTON P. U. D. AS RECORDED IN PLAT BOOK 44, PAGE 61, INCLUSIVE, OF THE PUBLIC RECORDS OF PALM BEACH COUNTY, FLORIDA, AND OTHER LANDS

IN PART OF SECTIONS 10 AND 15 TOWNSHIP 44 SOUTH, RANGE 41 EAST PALM BEACH COUNTY, FLORIDA

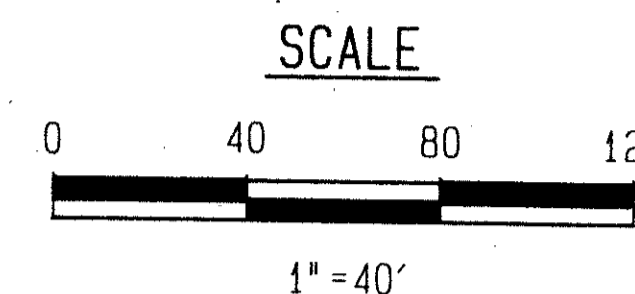
SHEET NO. 2 OF 3 SHEETS
OCTOBER 1990



INDEX MAP

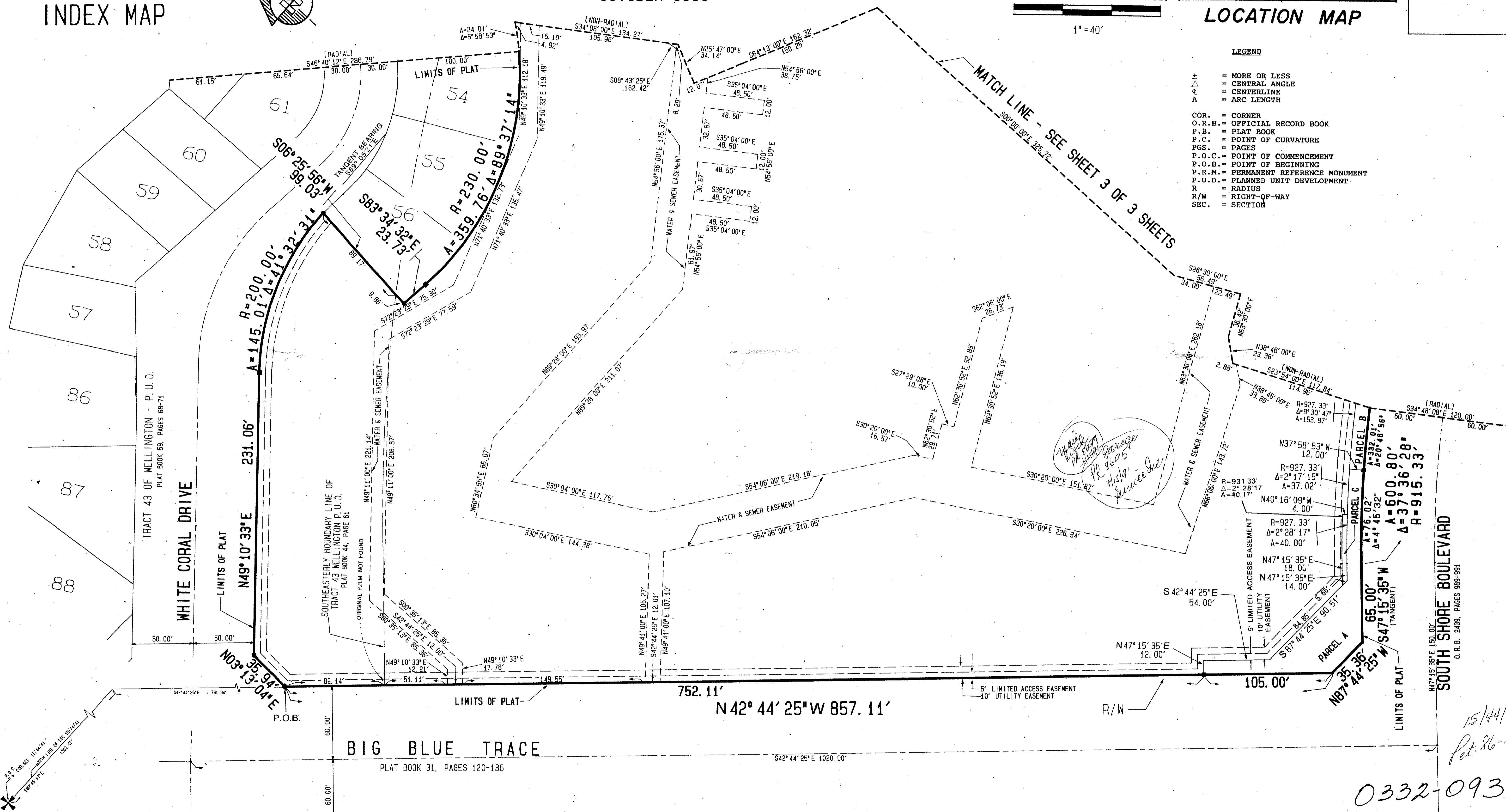


LOCATION MAP



LEGEND

- + = MORE OR LESS
- Δ = CENTRAL ANGLE
- = CENTERLINE
- A = ARC LENGTH
- COR. = CORNER
- O.R.B. = OFFICIAL RECORD BOOK
- P.B. = PLAT BOOK
- P.C. = POINT OF CURVATURE
- PGS. = PAGES
- P.O.C. = POINT OF COMMENCEMENT
- P.O.B. = POINT OF BEGINNING
- P.R.M. = PERMANENT REFERENCE MONUMENT
- P.U.D. = PLANNED UNIT DEVELOPMENT
- R = RADIUS
- R/W = RIGHT-OF-WAY
- SEC. = SECTION



TR 992

SECTION 10 & 15
TOWNSHIP 44 SOUTH
RANGE 41 EAST
PALM BEACH COUNTY
FLORIDA

TRACT 44 OF WELLINGTON - P.U.D.
PLAT BOOK 59, PAGES 66-71

DATE 12
REVISION 12
DRAWN BY AK
CHECKED BY
DATE 10/10/90

86-32

HUNTERS CHASE OF PALM BEACH POLO
& COUNTRY CLUB - WELLINGTON P. U. D.
PLAT BOOK 65, PAGES 165-168

15/44/41
Pet 86-32

0332-093

GREENVIEW SHORES NO. 2 OF WELLINGTON - P. U. D.
PLAT BOOK 31, PAGES 120-136

TRACT 44 OF WELLINGTON 107/12

Dailey-Fotony, inc.
land surveyors, planners, engineers

5050 10th Avenue North, Suite B - Lake Worth, Florida 33453 2602
Phone 407/565-8747